

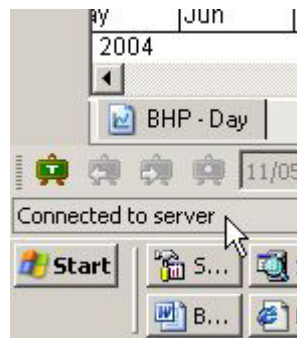


Connection status with BullCharts servers

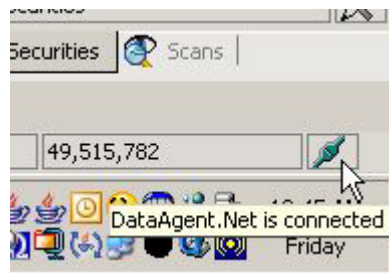
Determining if you are connected to the BullCharts server

Connected to the server

The normal operation displays a message 'Connected to server' in the bottom left hand corner of the screen as show below.

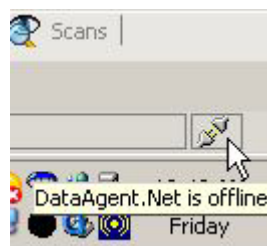


In addition, the BullCharts Data Agent icon is green and the 'plug' is connected.

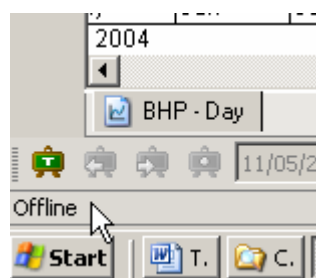


Not connected to the server

When disconnected from the BullCharts server the 'plug' is disconnected and grey.



Also you may have the message 'Offline' in the left hand corner of the screen



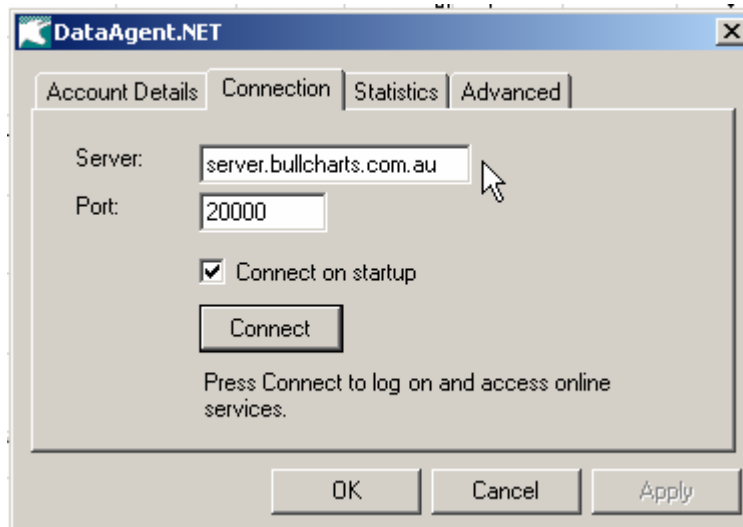
Attempting to connect to the server



This message may appear for the following reasons:

- Your firewall is not configured for Port 20000 to allow BullCharts to connect to the server.
- The name of the server is incorrect

You can check the correct settings from the Tools menu then select Login.



• Trade your own way •